

* All electric work shall conform to National Electrical Code (NEC), DC Electrical Code, District of Columbia Standard Specifications (blue book 2007), District of Columbia Streetlight Policy and Design Guidelines (March 2009).

* All electrical work shall be done by District of Columbia licensed and bonded electrical personnel. The Contractor shall contact Potomac Electric Power Company (Pepco) for service connections and disconnections to streetlights in this location. The Contractor shall submit five (5) sets of electrical streetlight drawings for Pepco SLF to streetlight. Pepco will send an invoice; the Contractor will pay all costs associated with it. All work and questions to be coordinated with Mr. Ali Zamani in the DC street light division (202) 671-4642.

* All electrical conduits are concrete encased with 3500 PSI class F concrete. All foundations to be concrete encased with 4500PSI class B wet mix.

* The conduits between the DC manholes and the streetlight poles shall be two (2) inch PVC.

* All electrical conduit to be 36" from face of curb to center of foundation & from face of curb to conduit maintaining a usable sidewalk with a minimum of 36" of cover.

* DDOT requirements are all lamps shall light emitting diode (LED), and wattage selection shall be according to the roadway classification unless specified and approved by Mr. Ali Zamani.

* Each light pole shall be provided with a photocell controller (Button Type) Warranty: 4 years, one for control replacement.

* All material that will be used in the street lighting inter-structure will be approved by the District before an electrical permit can be issued. Also all poles' foundations shall be installed 3' from face of curb to center of foundations.

11/11/2019 11:41 AM

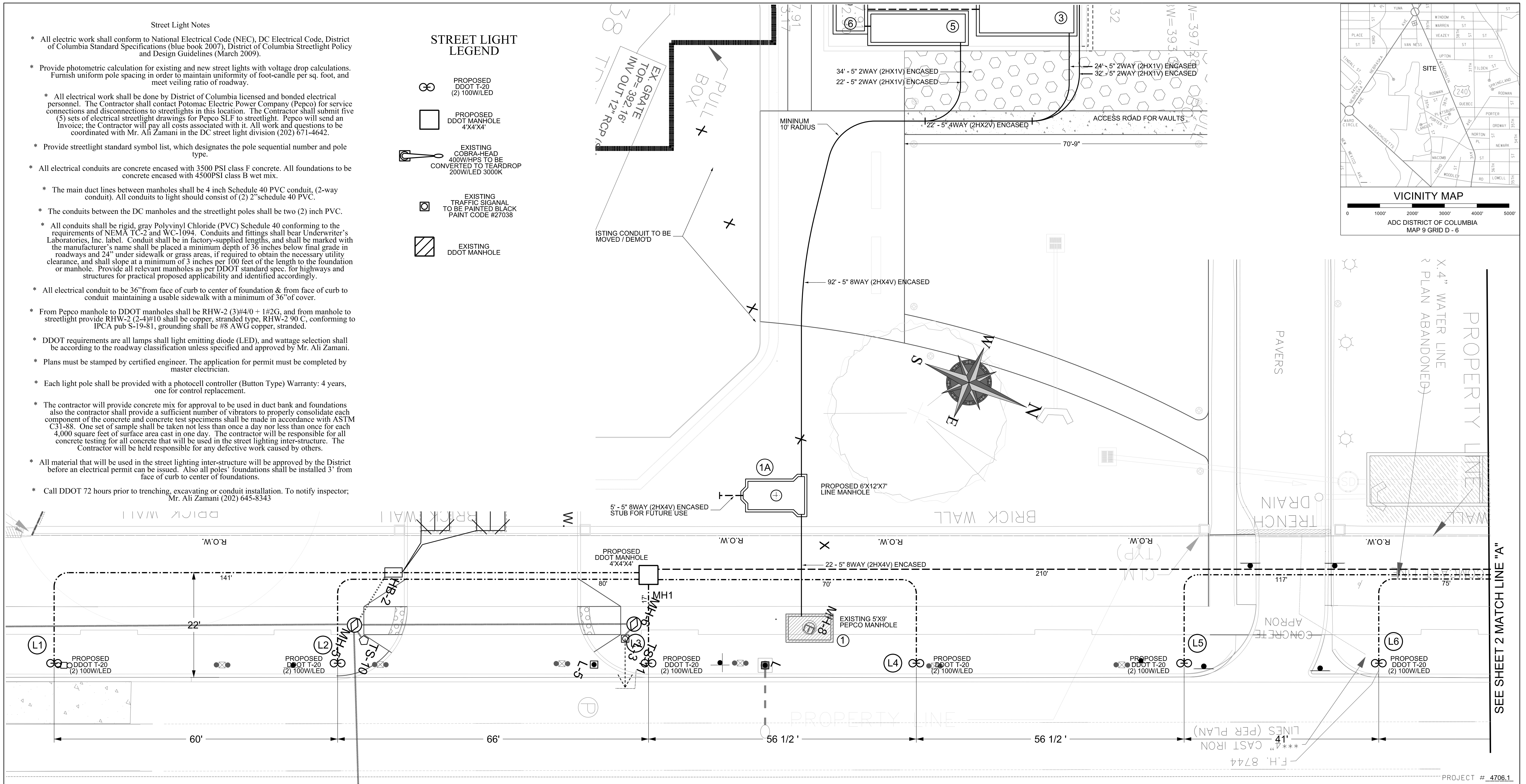
PROPOSED
DDOT T-20
(2) 100W/LED

PROPOSED
DDOT MANHOLE
4'X4'X4'

EXISTING
COBRA-HEAD
400W/HPS TO BE
CONVERTED TO TEARDROP
200W/LED 3000K

EXISTING
TRAFFIC SIGNAL
TO BE PAINTED BLACK
PAINT CODE #27038

 EXISTING
DDOT MANHOLE




REVISIONS		
No	DATE	DESCRIPTION



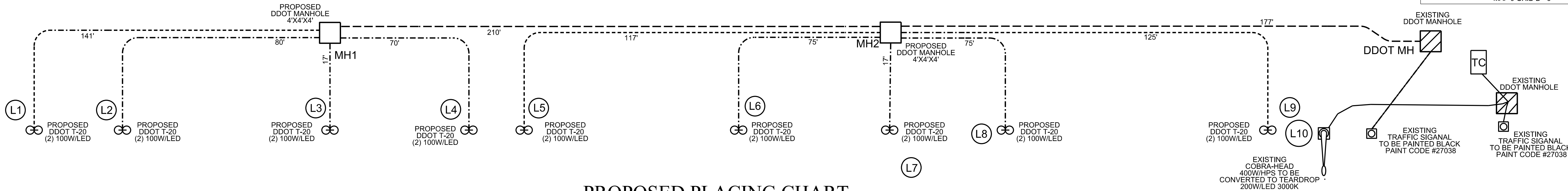
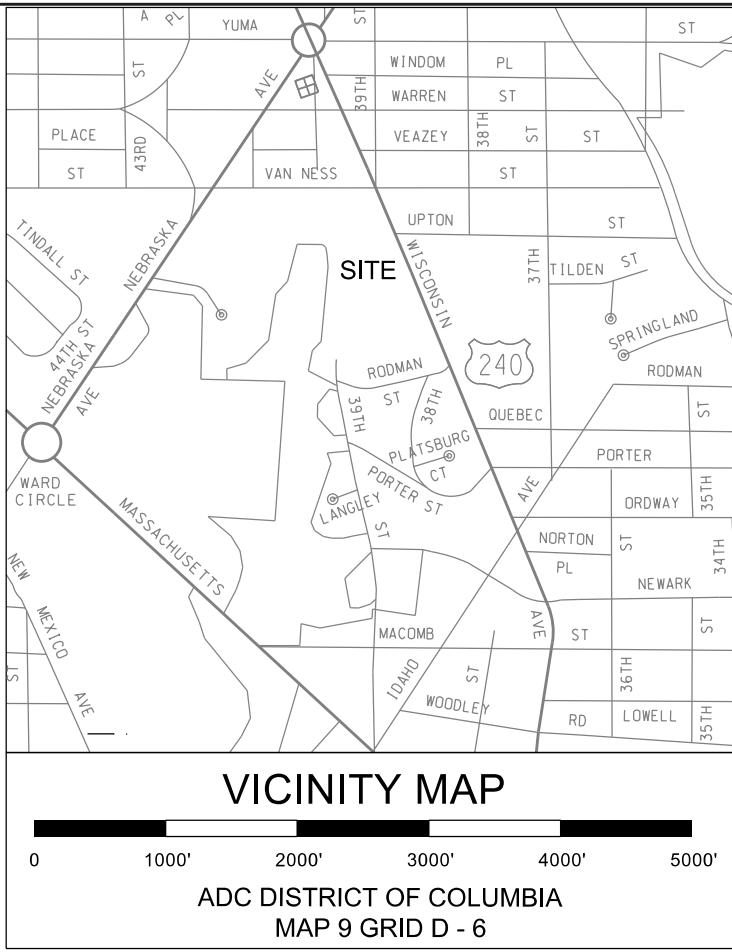
**Richter &
Associates**
7519 Standish Place, Suite 320
Rockville, MD 20855

(301) 548-7475 (Office)
(301) 548-7478 (Fax)

DESIGNED KAM	DRAWN KAM
DATE 02/27/19	SCALE 1" : 10'
APPROVED 	SHEET 1 OF 3

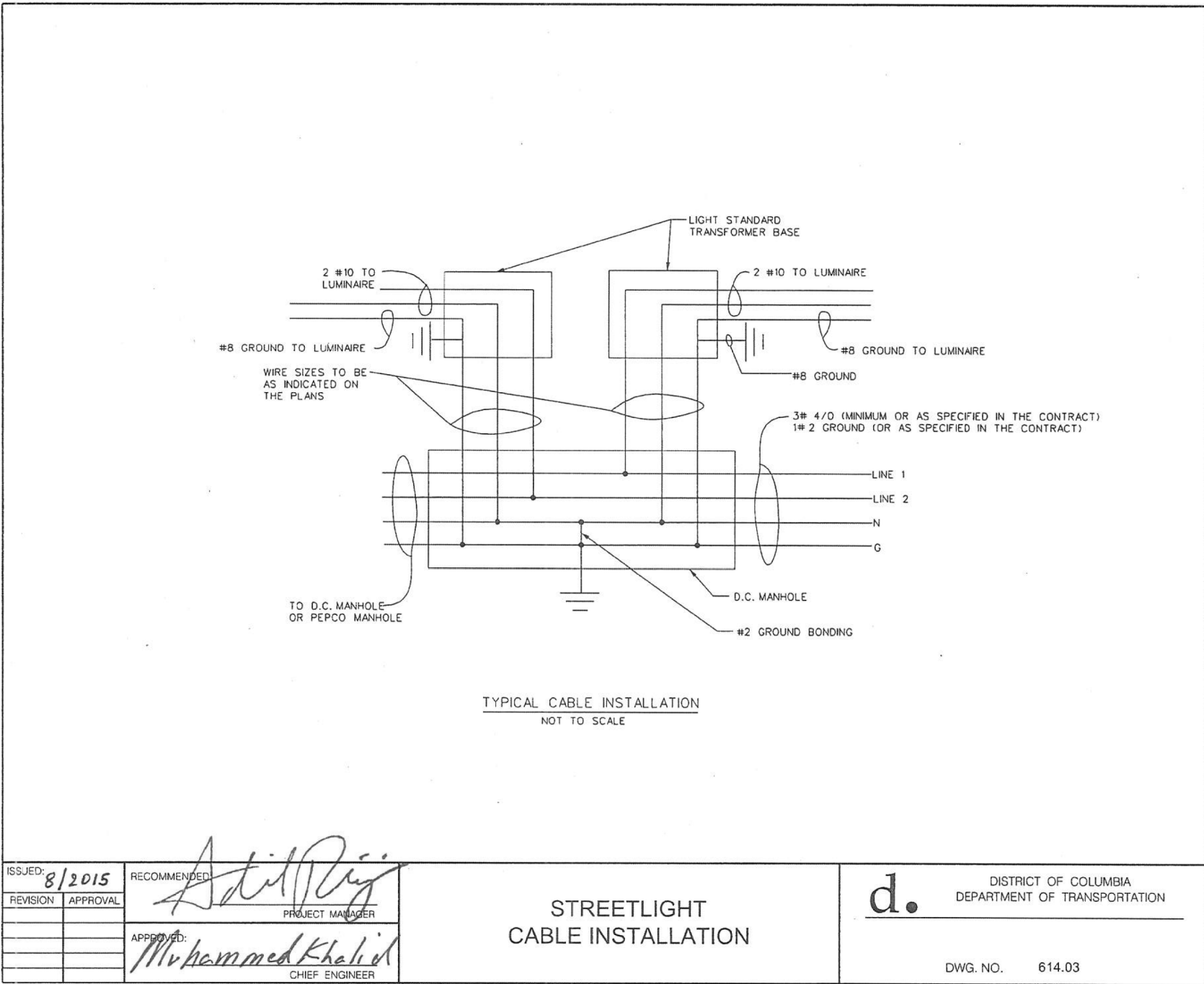
PROPOSED CABLE AND CONDUIT SCHEMATIC

- (3) 4/O RHW-2 (1) #2 BARE COPPER GROUND
(2) 4" SCHEDULE "40" PVC CONCRETE ENCASED
- (3) #10 RHW-2 (1) #8 BARE COPPER GROUND
(1) 2" SCHEDULE "40" PVC CONCRETE ENCASED
- (3) #8 RHW-2 (1) #2 BARE COPPER GROUND
(1) 2" SCHEDULE "40" PVC CONCRETE ENCASED



PROPOSED PLACING CHART

FROM	TO	DIST.	CABLE	CONDUIT	TYPE
MH1	L1	141'	(3) #8 RHW-2 (1) #8 BARE COPPER GROUND	2" 1-WAY SCHEDULE "40" PVC CONDUIT CONCRETE ENC.	DDOT TWIN- 20 100W/LED TYPE III 3000K
MH1	L2	80'	(3) #10 RHW-2 (1) #8 BARE COPPER GROUND	2" 1-WAY SCHEDULE "40" PVC CONDUIT CONCRETE ENC.	DDOT TWIN- 20 100W/LED TYPE III 3000K
MH1	L3	17'	(3) #10 RHW-2 (1) #8 BARE COPPER GROUND	2" 1-WAY SCHEDULE "40" PVC CONDUIT CONCRETE ENC.	DDOT TWIN- 20 100W/LED TYPE III 3000K
MH1	L4	70'	(3) #10 RHW-2 (1) #8 BARE COPPER GROUND	2" 1-WAY SCHEDULE "40" PVC CONDUIT CONCRETE ENC.	DDOT TWIN- 20 100W/LED TYPE III 3000K
MH1	MH2	210'	(3) #4/O RHW-2 (1) #2 BARE COPPER GROUND	4" 2-WAY SCHEDULE "40" PVC CONDUIT CONCRETE ENC.	DDOT 4'X4'X4' CONCRETE MANHOLE
MH2	L5	117'	(3) #8 RHW-2 (1) #8 BARE COPPER GROUND	2" 1-WAY SCHEDULE "40" PVC CONDUIT CONCRETE ENC.	DDOT TWIN- 20 100W/LED TYPE III 3000K
MH2	L6	75'	(3) #10 RHW-2 (1) #8 BARE COPPER GROUND	2" 1-WAY SCHEDULE "40" PVC CONDUIT CONCRETE ENC.	DDOT TWIN- 20 100W/LED TYPE III 3000K
MH2	L7	17'	(3) #10 RHW-2 (1) #8 BARE COPPER GROUND	2" 1-WAY SCHEDULE "40" PVC CONDUIT CONCRETE ENC.	DDOT TWIN- 20 100W/LED TYPE III 3000K
MH2	L8	75'	(3) #10 RHW-2 (1) #8 BARE COPPER GROUND	2" 1-WAY SCHEDULE "40" PVC CONDUIT CONCRETE ENC.	DDOT TWIN- 20 100W/LED TYPE III 3000K
MH2	L9	125'	(3) #8 RHW-2 (1) #8 BARE COPPER GROUND	2" 1-WAY SCHEDULE "40" PVC CONDUIT CONCRETE ENC.	DDOT TWIN- 20 100W/LED TYPE III 3000K
MH2	EX. DDOT	117'	(3) #4/O RHW-2 (1) #2 BARE COPPER GROUND	4" 2-WAY SCHEDULE "40" PVC CONDUIT CONCRETE ENC.	DDOT 4'X4'X4' CONCRETE MANHOLE



NOTIFY "MISS UTILITY" AT 1-800-257-7777
48 HOURS IN ADVANCE OF ANY
CONSTRUCTION IN THIS LOCATION

PROJECT # 4706.1

CITY RIDGE
3900 WISCONSIN AVE - NW, WASHINGTON, DC
STRUCTURAL FACILITY DRAWING
FOR PROPOSED DDOT STREET LIGHTS


REVISIONS		
No	DATE	DESCRIPTION



7519 Standish Place, Suite 320
Rockville, MD 20855

UTILITY ENGINEERING &
PROJECT MANAGEMENT

(301) 548-7475 (Office)
(301) 548-7478 (Fax)

DESIGNED KAM	DRAWN KAM
DATE 02/27/19	SCALE 1" = 10'
APPROVED 	SHEET 3 OF 3