

WARD 3 SHORT TERM FAMILY HOUSING (STFH)
PHASE II STFH FACILITY CONSTRUCTION UPDATE
October 11, 2019

| | | | |
|---|--|--|--|
| 50 Short-Term Family Housing Units | Dedicated Play & Common Areas | Supportive Programs | Community-Integrated Architectural Design |
| Substantial Completion December 31, 2019 | | New families are projected to move in starting March 2020 | |

Project Status:

- Mechanical, Electrical, and Plumbing (MEP) infrastructure and fixtures continue on all floors.
- Window installation ongoing on the 2nd through 6th floors.
- Interior painting and dry wall installation are ongoing.
- Brick Masonry installation is ongoing.
- Roofing installation is ongoing
- Door installation has started on the 2nd floor.

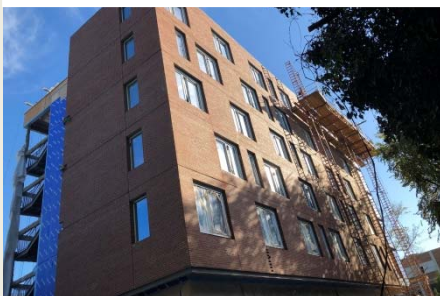
Community Advisory:

- Material deliveries will continue on a weekly basis providing dry wall, brick masonry fir proofing material, and windows.
- Starting the week of October 14th Smoot will be connecting to the storm water system in the street .

Note: *Smoot, the general contractor is on site and will provide flaggers who will control traffic and ensure safety during all deliveries*

Questions? Please direct all inquiries to STFHprojects.dgs@dc.gov

Brick Masonry Installation



Roofing installation



Storm water infrastructure



For your safety, only authorized personnel are allowed to access the construction sites