

**WARD 3 SHORT TERM FAMILY HOUSING (STFH)**  
**PHASE II STFH FACILITY CONSTRUCTION UPDATE**  
 September 27, 2019

<b>50 Short-Term Family Housing Units</b>	<b>Dedicated Play &amp; Common Areas</b>	<b>Supportive Programs</b>	<b>Community-Integrated Architectural Design</b>
<b>Substantial Completion December 31, 2019</b>		<b>New families are projected to move in starting March 2020</b>	

**Project Status:**

- Mechanical, Electrical, and Plumbing (MEP) infrastructure and fixtures continue on all floors.
- Window installation ongoing on the 2<sup>nd</sup> through 6<sup>th</sup> floors.
- Low voltage wiring installation is in progress.
- Standby Generator has been set .
- Brick Masonry installation is ongoing.
- Roofing installation is ongoing.
- Site utility installation continues.

**Community Advisory:**

- Material deliveries will continue on a weekly basis providing dry wall, brick masonry fir proofing material, and windows.

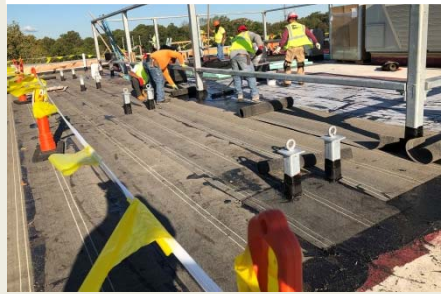
*Note: Smoot, the general contractor is on site and will provide flaggers who will control traffic and ensure safety during all deliveries.*

**Questions?** Please direct all inquiries to [STFHprojects.dgs@dc.gov](mailto:STFHprojects.dgs@dc.gov)

**Brick Masonry Installation**



**Roofing installation**



**Standby Generator installed**



**For your safety, only authorized personnel are allowed to access the construction sites**