

**WARD 3 SHORT TERM FAMILY HOUSING (STFH)**  
**PHASE II STFH FACILITY CONSTRUCTION UPDATE**  
 August 23, 2019

<b>50 Short-Term Family Housing Units</b>	<b>Dedicated Play &amp; Common Areas</b>	<b>Supportive Programs</b>	<b>Community-Integrated Architectural Design</b>
<b>Substantial Completion December 31, 2019</b>		<b>New families are projected to move in starting March 2020</b>	

**Project Status:**

- Pepco Permanent power has been installed
- Mechanical, Electrical, and Plumbing (MEP) infrastructure and fixtures continue on all floors.
- Continue installation of Windows on floors 2nd – 6th floor.
- Stair #2 installation is in progress.
- Elevator shaft installation continues.
- Elevator equipment has been delivered.
- Utility installation is in progress.

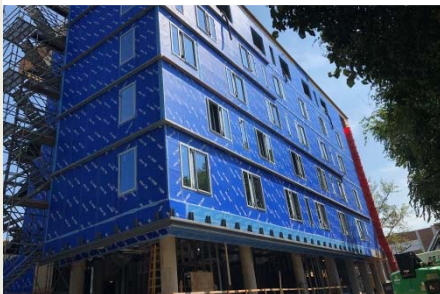
**Community Advisory:**

- Material deliveries will continue on a weekly basis providing dry wall, brick masonry fir proofing material, and windows.

**Note:** *Smooth, the general contractor is on site and will provide flaggers who will control traffic and ensure safety during all deliveries.*

**Questions?** Please direct all inquiries to [STFHprojects.dgs@dc.gov](mailto:STFHprojects.dgs@dc.gov)

**Window & Steel Angle Installation**



**Excavation for Site Utilities**



**Stair #2 Intallation**



***For your safety, only authorized personnel are allowed to access the construction sites***