

**WARD 3 SHORT TERM FAMILY HOUSING (STFH)**  
**PHASE II STFH FACILITY CONSTRUCTION UPDATE**  
 July 15, 2019

<b>50 Short-Term Family Housing Units</b>	<b>Dedicated Play &amp; Common Areas</b>	<b>Supportive Programs</b>	<b>Community-Integrated Architectural Design</b>
<b>Substantial Completion December 31, 2019</b>		<b>New families are projected to move in starting March 2020</b>	

**Project Status:**

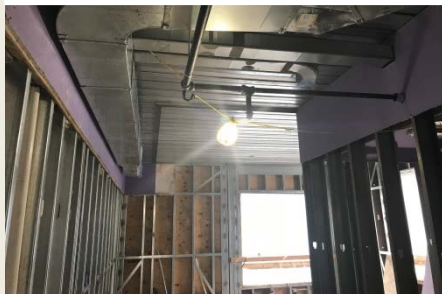
- Roof slab has been poured
- Mechanical, Electrical and Plumbing (MEP) infrastructure continue on all floors.
- Installation of Hollow Metal (HM) Door frame continues on the third floor.
- Placement of Fireproofing is on going.
- Metal pan stair system installation is ongoing.
- Fire proofing installation is ongoing.

**Community Advisory:**

- Material deliveries will continue on a weekly basis providing structural steel, structural wall panels, metal decking, reinforcing steel, and wood to shore up each floor of the building.  
*Note: Smooth, the general contractor is on site and will provide flaggers who will control traffic and ensure safety during all deliveries.*
- Concrete pours for the elevated decks will be on a two week per floor pouring cycle.

**Questions?** Please direct all inquiries to [STFHprojects.dgs@dc.gov](mailto:STFHprojects.dgs@dc.gov)

**2<sup>nd</sup> Flr. MEP infrastructure**



**Metal Pan Stair installation**



**Roof**



**For your safety, only authorized personnel are allowed to access the construction sites**